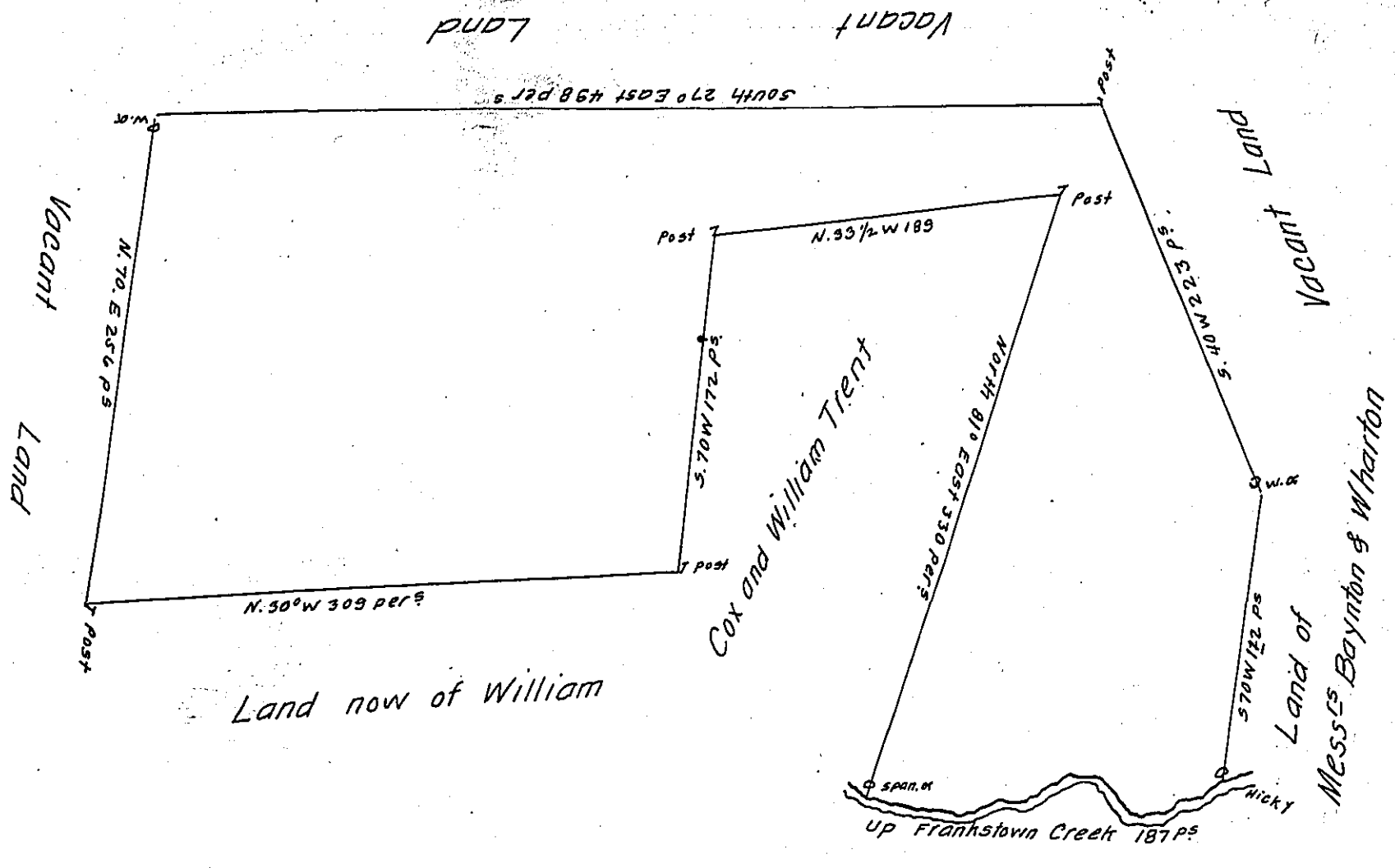


FORM NO. 1.



A Draught of a Tract of Land situate on the Frankstown branch of Juniata River in the County of Cumberland containing Seven Hundred and thirty five Acres and the usual allowance of six acres & Co. for Roads &c. Surveyed the 24<sup>th</sup> day of May 1766 for Thomas Woods in pursuance of a Warrant dated the 20<sup>th</sup> day of September 1762.

To John Lukens Esq<sup>r</sup> }  
 Surveyor General } & Richard Tea. Dep<sup>y</sup> Survey<sup>r</sup>

The above Survey containing much more than the Quantity specifyd in the Warrant may be accepted Subject to any real Improvements Warrants or Locations on the over plus before the time of making the Survey. By order of the Govern<sup>r</sup>.

James Tilghman Secty  
 of the Land Office

Now Bedford County.

IN TESTIMONY that the above is a copy of the original remaining on file in the Department of Internal Affairs of Pennsylvania, made conformably to an Act of Assembly approved the 16th day of February 1833, I have hereunto set my hand and caused the Seal of said Department to be affixed at Harrisburg, this thirtieth day of April 1907.

*Leads P. Brown*  
 Secretary of Internal Affairs.